

1-Way Cassette

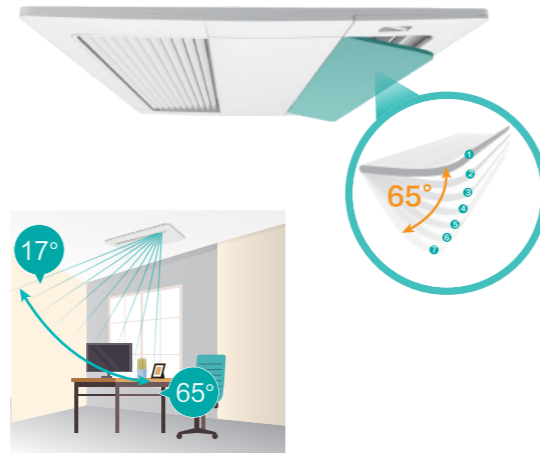
Seamless Integration

The one-way cassette unit features a minimalist and elegant design that seamlessly integrates with indoor decor. Its compact body not only saves space but also effectively directs airflow, making it ideal for installation in confined spaces.



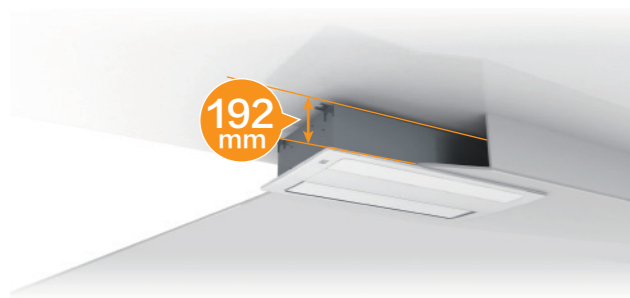
Even Air Supply

The louvers are composed of horizontal and vertical slats to evenly distribute air. With adjustable angles ranging from 17° to 65°, it effectively direct air further and downward to the floor, which is especially beneficial during heating mode.



Space Saving

Slim body height of 192mm fits in limited ceiling spaces commonly seen in budget hotels and residential applications.

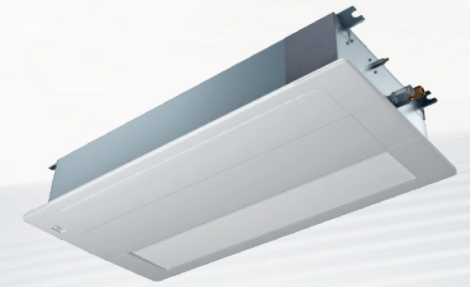


Easier Maintenance

The electrical box is located at the bottom of the unit, allowing easy access to the PCB by simply removing the panel and box cover. This design simplifies commissioning and maintenance, streamlining the process and reducing both time and costs.



1-Way Cassette



Model		AVY-07UXJSJA	AVY-09UXJSJA	AVY-12UXJSJA	AVY-14UXJSJA	AVY-18UXJSKA	AVY-24UXJSKA		
Power Supply		AC 1Φ, 220~240V/50Hz/60Hz							
Capacity	Cooling	kW	2.2	2.8	3.6	4.5	5.6	7.1	
		Btu/h	7,500	9,600	12,300	15,400	19,100	24,200	
Power Input	Heating	kW	2.5	3.2	4.0	5.0	6.3	8.0	
		Btu/h	8,500	10,900	13,600	17,100	21,500	27,300	
Sound Pressure	Cooling	W	14	14	24	34	34	74	
	Heating	W	14	24	34	44	44	94	
Airflow Rate		dB(A)	33/32/31/30/29/28	35/34/32/31/29/28	40/36/35/33/30/29	40/36/35/33/30/29	41/39/36/35/33/31	48/46/43/40/37/33	
		m ³ /min	6.2/5.9/5.6/5.1/4.8/4.6	6.6/6.2/5.6/5.1/4.8/4.6	8.3/7.3/6.8/6.2/5.6/5.1	8.3/7.3/6.8/6.2/5.6/5.1	12.1/9.9/8.8/8.2/7.8/6.6	15.6/12.6/11.2/9.9/8.4/7.1	
	Connection Type	-	Flare-nut Connection (with Flare Nuts)						
Piping	Liquid	mm	φ6.35	φ6.35	φ6.35	φ6.35	φ6.35	φ9.53	
		inch	1/4	1/4	1/4	1/4	1/4	3/8	
	Gas	mm	φ12.70	φ12.70	φ12.70	φ12.70	φ15.88	φ15.88	
		inch	1/2	1/2	1/2	1/2	5/8	5/8	
Condensate Drain	mm	I.D.32							
Weight	Net Weight	kg	19	19	20	20	24	24	
	Gross Weight	kg	23	23	24	24	29	29	
Dimensions	External	H	mm	192	192	192	192	192	192
		W	mm	910	910	910	910	1180	1180
		D	mm	470	470	470	470	470	470
	Packaging	H	mm	268	268	268	268	268	268
		W	mm	1136	1136	1136	1136	1406	1406
		D	mm	574	574	574	574	574	574
Model	-	HP-D-NA	HP-D-NA	HP-D-NA	HP-D-NA	HP-E-NA	HP-E-NA		
Panel Colour	-	Neutral White							
Body	H	mm	55	55	55	55	55	55	
	W	mm	1100	1100	1100	1100	1370	1370	
	D	mm	550	550	550	550	550	550	
Panel	H	mm	130	130	130	130	130	130	
	W	mm	1160	1160	1160	1160	1430	1430	
	D	mm	610	610	610	610	610	610	
Net Weight	kg	5	5	5	5	6	6		
	Gross Weight	kg	8	8	8	8	10	10	

Notes:

1. The nominal cooling capacity is based on the following conditions:
 Indoor Air Inlet Temperature: 27°C DB (80°F DB), 19.0°C WB (66.2°F WB)
 Outdoor Air Inlet Temperature: 35°C DB (95°F DB)
 Piping Length: 7.5 Meters Piping Lift: 0 Meter

2. The sound pressure level is based on the following conditions: 1.0m beneath the unit, 1.0m from Discharge Grille. The above data was measured in an anechoic chamber so that the reflected sound should be taken into consideration in the field. When bottom air inlet is adopted, the sound pressure will increase according to factors such as installation mode and the room structure.