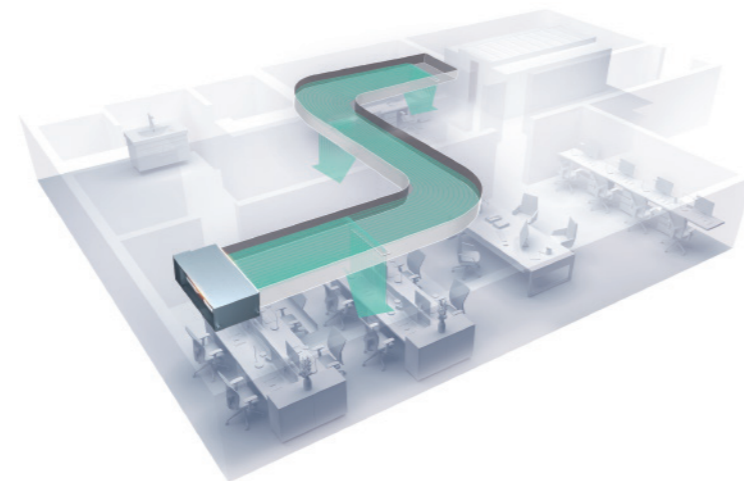
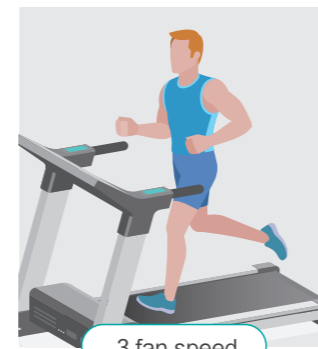
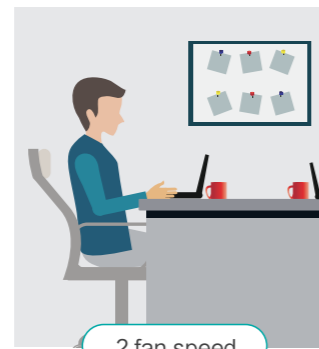
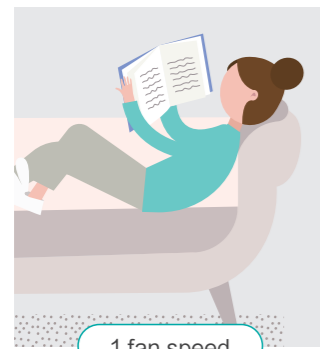


All Fresh Air Indoor Unit

Multiple Fan Speeds

Equipped with a DC motor, our system offers three-level fan speeds that can be flexibly adjusted to suit different indoor conditions.



Adjustable Static Pressure

Three static pressure modes can be adjusted to meet the needs of different air supply distance, making installation more flexible and effectively sends conditioned air to every corner of the room.

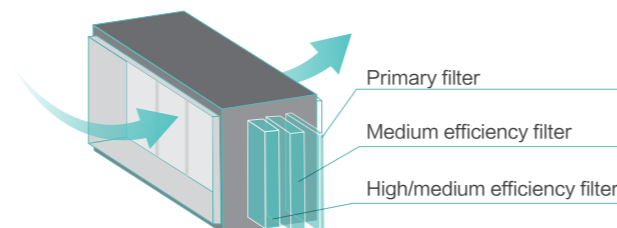
Self-cleaning Function

Featured with self-cleaning technology, the evaporator can be self-cleaned automatically, preventing the dust and potentially harmful substances from accumulating on the surface of the heat exchanger. It ensures that the air blown from the air conditioner is clean and healthy.

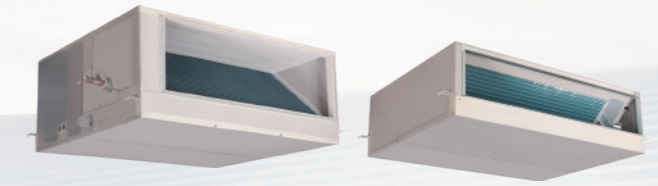


PM2.5 Filter Box

Equipped with a high-performance filter box, our air conditioning system removes impurities from outdoor air, ensuring the air you breathe is cleaner and healthier. Besides, the filter box is designed for easy maintenance and replacement, allowing for seamless system operation.



All Fresh Air Indoor Unit



Model		AVA-48HJFDL-108	AVA-76HJFDL-168	AVA-96HJFDL-210	AVA-114HJFDL-300	
Power Supply		AC 1Φ, 220V~240V/50Hz/60Hz				
Capacity	Cooling	kW	14.0	22.4	28.0	33.5
		Btu/h	47,800	76,500	95,600	114,400
	Heating	kW	13.7	21.9	24.5	26.4
		Btu/h	46,800	74,800	83,600	90,100
Power Input	Cooling	W	190	311	421	721
	Heating	W	190	311	421	721
Sound Pressure	dB(A)	42	46	48	49	
Airflow Rate	m³/min	18.0/15.6/13.3	28.0/23.2/18.3	35.0/31.7/26.7	50.0/41.7/33.3	
External Static Pressure	Pa	150(150-200-250)	150(150-200-250)	150(150-200-250)	150(150-220-300)	
Piping	Connection Type	Flare-Nut Connection (with Flare Nuts)		Brazing		
	Liquid	mm	Φ9.53	Φ9.53	Φ9.53	Φ12.70
		inch	3/8	3/8	3/8	1/2
	Gas	mm	Φ15.88	Φ19.05	Φ22.20	Φ25.40
		inch	5/8	3/4	7/8	1
	Condensate Drain	mm	VP25			
Weight	Net Weight	kg	56	107	108	108
	Gross Weight	kg	62	124	125	125
Dimensions	External	H mm	320	484	484	484
		W mm	790	1072	1072	1072
		D mm	1420	1269	1269	1269
	Packaging	H mm	420	1213	1213	1213
		W mm	1650	1450	1450	1450
		D mm	955	530	530	530

Notes:

- The nominal cooling capacity and heating capacity are based on following conditions: Cooling operation conditions: 35°C DB, 28°C WB, piping length: 7.5m, piping lift: 0m. Heating operation conditions: 0°C DB, -3°C WB, piping length: 7.5m, piping lift: 0m. (Heating capacity is tested when defrosting is not available.)
- The sound pressure level is based on following conditions: 1.4m beneath the unit. The above data was measured in an anechoic chamber so that reflected sound should be taken into consideration in the field.
- In case of connecting the all fresh air indoor unit with other indoor units in the same refrigerant cycle, the total capacity of all fresh air indoor unit shall not exceed 30% of the rated capacity of VRF outdoor unit.
- When the outdoor unit is connected only with all fresh air indoor unit, the combination ratio is 80 ~ 100%.

RELIABILITY
EFFICIENCY
COMFORT
FLEXIBILITY
OUTDOOR UNIT
INDOOR UNIT
CONTROL SYSTEM
ACCESSORY