

Indoor Unit

Indoor Unit

Wall Mounted Type



Elegant Smooth Panel Design with Hidden LED Display

The quality of "elegance" is additionally provided to meet contemporary needs. Features a simple, smooth form that harmonizes with any interior style. Smooth panel design can be cleaned easily.



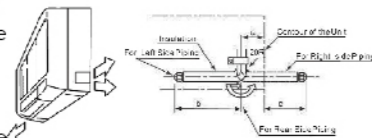
Anti-mold Filter

Anti-mold filter is equipped as standard accessory.

Free Installation

Water drain pipe can be set either left or right sides of the unit

Connection pipe can be set in left, right or back side of the unit



Compact and Light Weight, Allowing Easy Installation

Designed with ease of installation in mind, this new model adopts a slim design and uses a high proportion of lightweight resin parts. Unit weight has been vastly reduced.

Sleep Mode Bring You Comfortable Temperature for Good Sleep

Sleep mode can be kept for 8 hours, the setting temperature will be adjusted automatically for your comfortable.

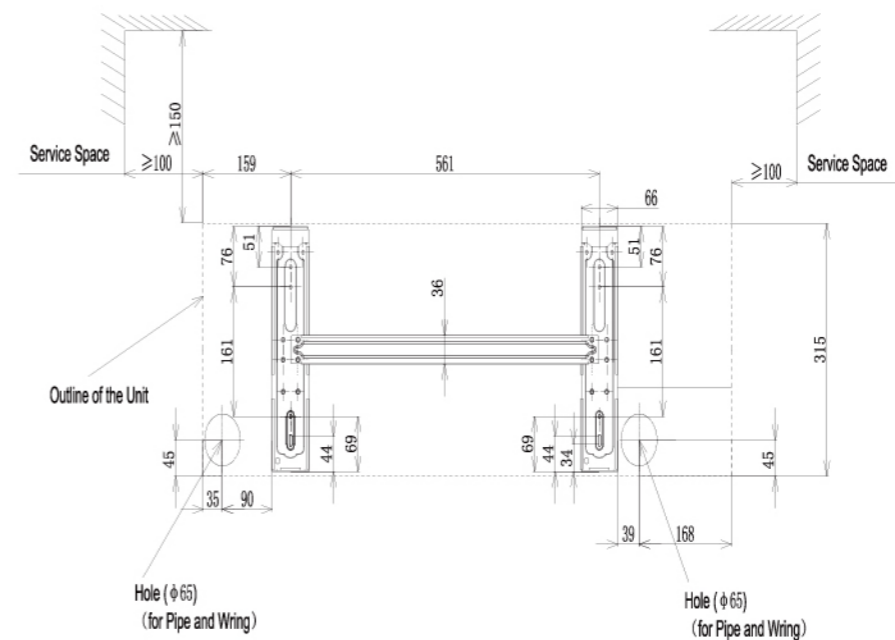
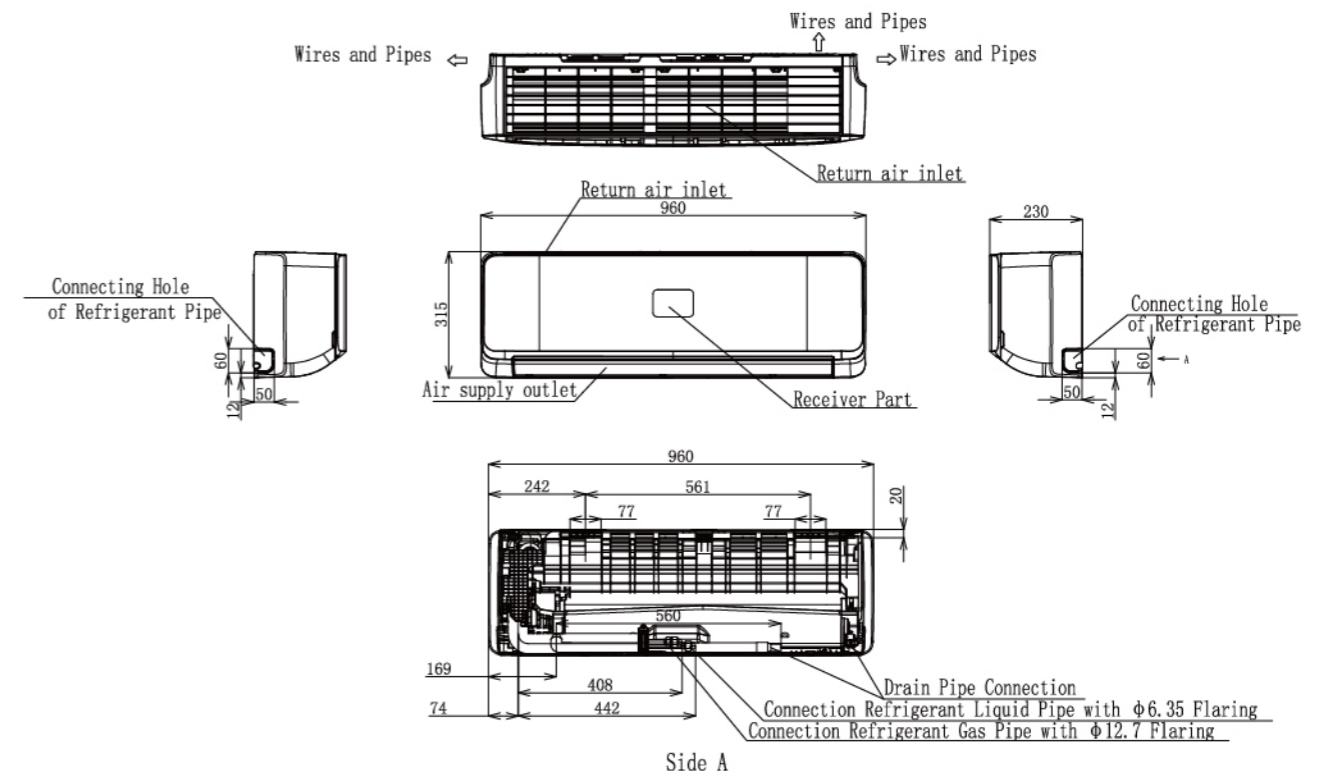
Quiet Operation for Super Low Sound Level

One touch quiet operation can set system work in super low speed and you will get very low noise level to 28 dB(A)



* The wireless remote controller HYE-L01 is standard for New Wall Mounted Type

Models: AVS-07~17* Model Unit:mm



Model		AVS-07URCSABA	AVS-09URCSABA	AVS-12URCSABA	AVS-14URCSABA	AVS-17URCSABA
Power Supply		AC1 ϕ , 220V~240V/50Hz				
Nominal Cooling Capacity	KW	2.2	2.8	3.6	4.0	5.0
	Kcal/h	1,900	2,400	3,100	3,450	4,300
	Btu/h	7,500	9,500	12,300	13,600	17,000
Nominal Heating Capacity	KW	2.5	3.3	4.0	4.5	5.6
	Kcal/h	2,150	2,800	3,450	3,900	4,800
	Btu/h	8,500	11,100	13,600	15,300	19,100
Sound Pressure Level (High/Medium/Low/Mute)	dB(A)	39/34/32/28	39/34/32/28	43/39/32/28	43/39/32/28	45/40/34/29
Outer Dimensions(HxWxD)	mm	315x960x230				
Net Weight	Kg	13.5				
Refrigerant		R410A				
Indoor Fan Air Flow Rate (High/Medium/Low/Mute)	m ³ /h	660/590/520/460	660/590/520/460	830/660/520/460	830/660/520/460	900/750/590/460
Motor Power	W	50	50	60	60	65
Connections Refrigerant Piping		Flare-nut Connection(with Flare Nuts)				
Liquid Line	mm	$\phi 6.35$				
Gas Line	mm	$\phi 12.7$				
Condensate Drain		VP16				
Packing Dimensions (H*W*D)	mm	445*1080*355				
Packing Measurement	m ³	0.17				

NOTES:
1. The nominal cooling capacity and heating capacity are based on following conditions:
Cooling Operation Conditions
Indoor Air Inlet Temperature: 27°C DB(80°F DB), 19.0°C WB(66.2°F WB)
Outdoor Air Inlet Temperature: 35°C DB(95°F DB)
Piping Length: 7.5 Meters Piping Lift: 0 Meter
Heating Operation Conditions
Indoor Air Inlet Temperature: 20°C DB(68°F DB)
Outdoor Air Inlet Temperature: 7°C DB(45°F DB), 6°C WB(43°F WB)

2. The sound pressure level is based on following conditions:
1.0m beneath the unit and 1.0m from inlet grille.
Voltage of the power source for the indoor fan motor is 220V.
In case of the power source of 240V, the sound pressure level increases by about 1*2dB.
The above data was measured in an anechoic chamber so that reflected sound should be taken into consideration in the field.

Indoor Unit

Indoor Unit

Wall Mounted Type



Elegant Design, Harmonizing with Any Type of Interior Design

The quality of "elegance" is additionally provided to meet contemporary needs. Features a simple, smooth form that harmonizes with any interior style.

Anti-mold Filter

Anti-mold filter is equipped as standard accessory.

Compact and Light Weight, Allowing Easy Installation

Designed with ease of installation in mind, this new model adopts a slim design and uses a high proportion of lightweight resin parts. Unit weight has been vastly reduced.

Use The New "Wonder Flap"

Uses the "Wonder Flap" in its air outlet. The flap, provided with three flow guides each at its right and left sides, helps disperse the air flow. This widening effect allows the air to be comfortably circulated throughout the room.

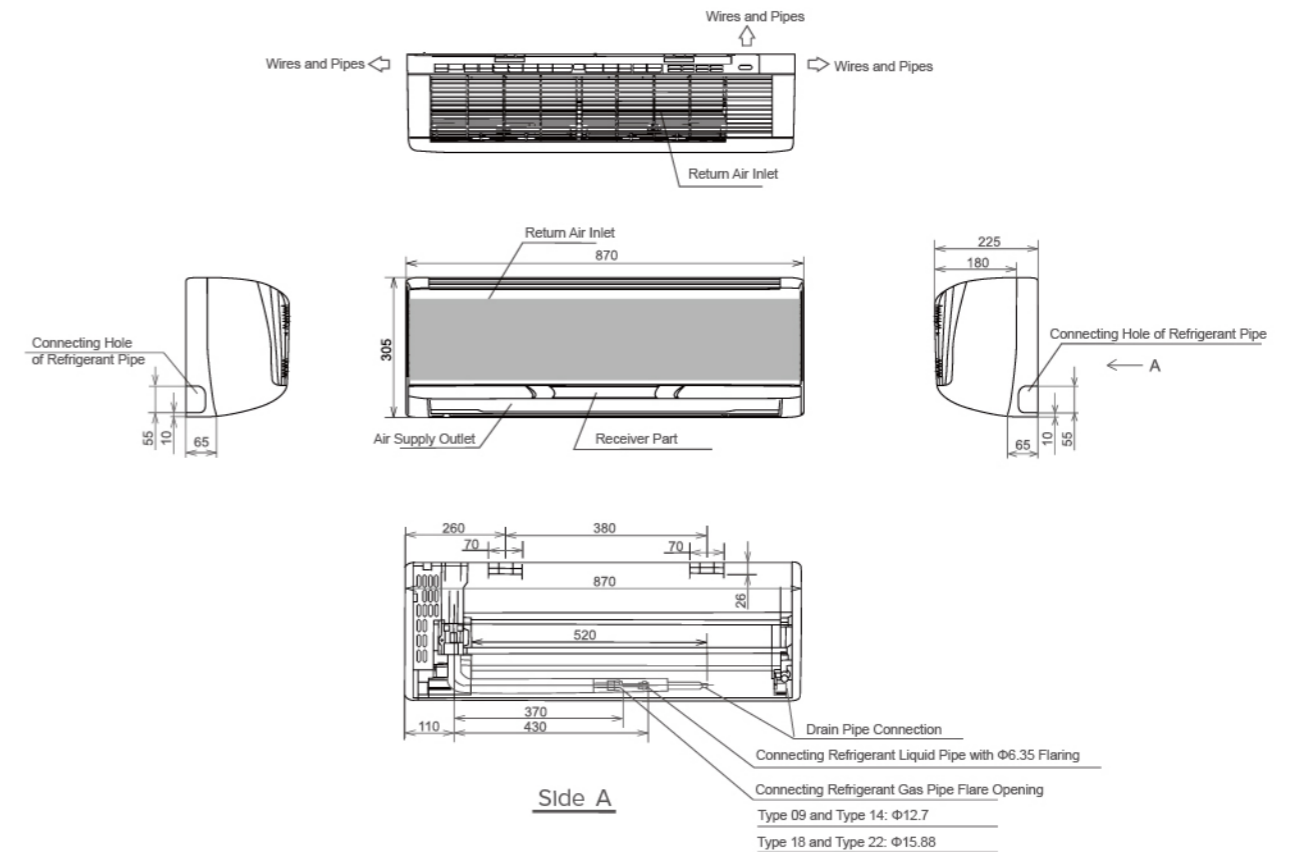


* The wireless remote controller HYE-Q01 is as a standard part for Wall Mounted Type.



Models: AVS-09-22* Model

Unit:mm



Outdoor Unit Specifications

Indoor Unit	Wall Mounted Type				
Model	AC1Φ, 220~240V/50Hz	AVS-09URCSRAA	AVS-14URCSRAA	AVS-18URCSRAA	AVS-22URCSRAA
Power Supply	AC1Φ, 220V/60Hz	AVS-09UR2SRAA	AVS-14UR2SRAA	AVS-18UR2SRAA	AVS-22UR2SRAA
Nominal Cooling Capacity	KW	2.8	4.0	5.6	6.3
	Kcal/h	2,400	3,400	4,800	5,400
	Btu/h	9,600	13,700	19,100	21,500
Nominal Heating Capacity	KW	3.2	4.8	6.3	7.5
	Kcal/h	2,800	4,100	5,400	6,500
	Btu/h	10,900	16,400	21,500	25,600
Sound Pressure Level(High/Medium/Low)	dB(A)	38-36-33	41-37-34	43-41-38	44-43-42
Cabinet Color		Silky White			
Outer Dimensions(H×W×D)	mm	305×870×225			
Net Weight	Kg	9	16	22	24
Refrigerant		R410A(Nitrogen-charged for Corrosion-resistance)			
Indoor Fan Air Flow Rate(Cooling/Heating)	m ³ /h	650/600/550	720/630/570	770/700/620	820/770/710
Motor Power	W	40	50	60	60
Connections Refrigerant Piping		Flare-nut Connection(with Flare Nuts)			
Liquid Line	mm	Φ6.35	Φ6.35	Φ6.35	Φ6.35
Gas Line	mm	Φ12.7	Φ12.7	Φ15.88	Φ15.88
Condensate Drain		VP16	VP16	VP16	VP16
Approximate Packing Measurement	m ³	0.11	0.11	0.11	0.11
Standard Accessories		Wall Mounting Bracket			

NOTES:
 1.The nominal cooling capacity and heating capacity are based on following conditions:
 Cooling Operation Conditions
 Indoor Air Inlet Temperature: 27°C DB(80°F DB), 19.0°C WB(66.2°F WB)
 Outdoor Air Inlet Temperature: 35°C DB(95°F DB)
 Piping Length: 7.5 Meters Piping Lift: 0 Meter
 Heating Operation Conditions
 Indoor Air Inlet Temperature: 20°C DB(68°F DB)
 Outdoor Air Inlet Temperature: 7°C DB(45°F DB), 6°C WB(43°F WB)

2. The sound pressure level is based on following conditions:
 1.0m beneath the unit and 1.0m from inlet grille.
 Voltage of the power source for the indoor fan motor is 220V.
 In case of the power source of 240V, the sound pressure level increases by about 1-2dB.
 The above data was measured in an anechoic chamber so that reflected sound should be taken into consideration in the field.

