

Indoor Unit

Indoor Unit

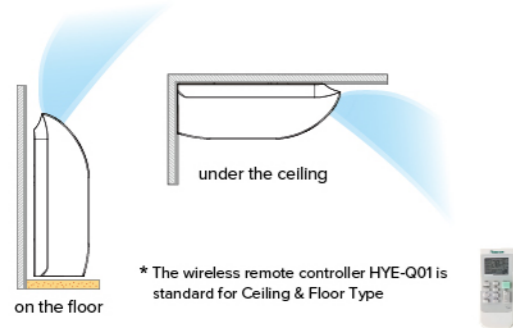
Ceiling & Floor Type

New Fashion Design Appearance and High Quality

The fashionable design and streamline appearance make it a perfect choice for users. The integrative side panel makes the whole unit more concordant. Huge air outlet with an integrative large louver realizes high air volume and low noise.

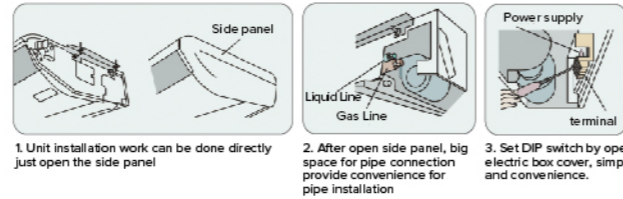
Multiple Installation Way

The unit can be installed either stand on the floor or hang under the ceiling.



Convenient Installation and Maintenance

Advanced structure design that make the unit installation, pipe connection, even wiring work into simple.



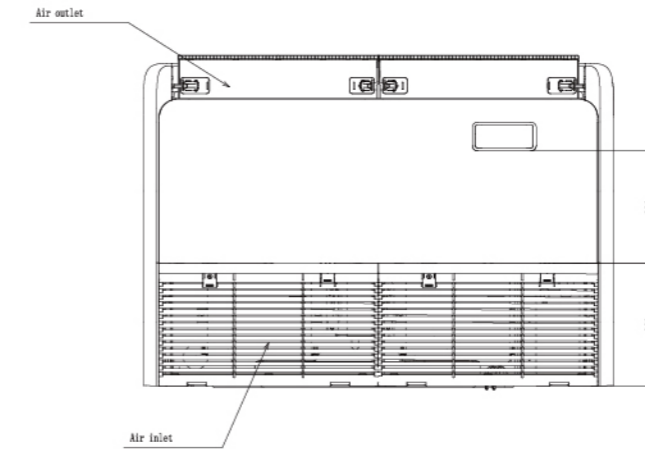
1. Unit installation work can be done directly just open the side panel
 2. After open side panel, big space for pipe connection provide convenience for pipe installation
 3. Set DIP switch by opening electric box cover, simple and convenience.

Intelligent 3D Air Flow

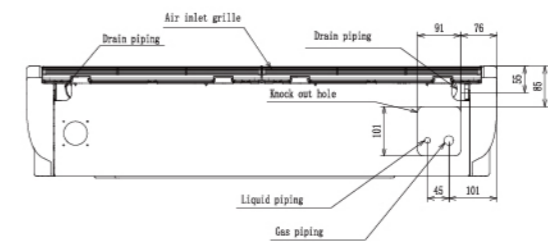
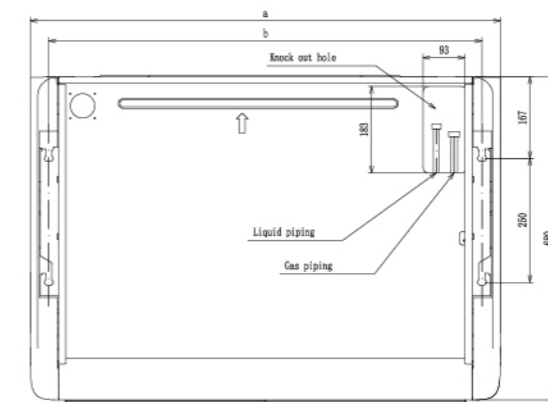
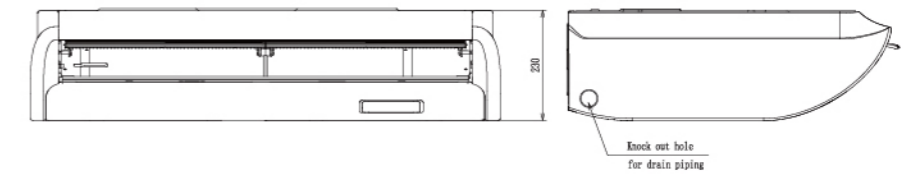
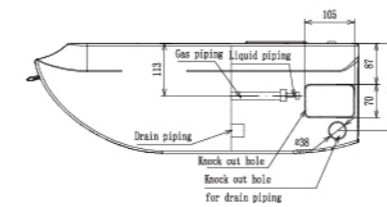
With horizontal and vertical air louver, the air flow can be adjusted freely. Fulfill the optimum air organization, more comfortable.



Models: AVV-17~48* Model Unit:mm



Model	a	b
17-24	912	996
27-38	1207	1285
48	1502	1580



Indoor Unit		Ceiling and Floor							
Model		AVV-17URSCA	AVV-18URSCA	AVV-22URSCA	AVV-24URSCA	AVV-27URSCB	AVV-30URSCB	AVV-38URSCB	AVV-48URSCC
Power Supply		220-240V/50HZ							
Nominal Cooling Capacity	KW	5	5.6	6.3	7.1	8.4	9	11.2	14.2
	Btu/h	17,100	19,107	21,500	24,225	28,661	30,708	38,214	48,450
Nominal Heating Capacity	KW	5.6	6.5	7.5	8.5	9.6	10	13	16.3
	Btu/h	19,100	22,178	25,600	29,002	32,755	34,120	44,356	55,616
Motor Power	W	40	33	70	33	150	150	150	250
Air Flow Rate(H/M/L)	m ³ /h	780/660/520	780/660/540	966/840/678	966/840/678	1,110/912/732	1,176/978/798	1,488/1,230/978	1,980/1,680/1,380
Noise Level (Ceiling)	dB(A)	39/35/30	39/34/29	45/41/37	44/41/36	42/38/32	44/39/35	50/44/39	50/46/41
Noise Level (Floor)	dB(A)	43/38/35							
Outer Dimensions	mm	990x680x230	990x680x230	990x680x230	990x680x230	1,285x680x230			1,580x680x230
Net Weight	Kg	31	29	32	30	38	39	40	47
Gross Weight	Kg	38	33	39	34	43	44	45	53
Refrigerant		R410A(Nitrogen-charged for Corrosion-resistance)							
Piping Connection		Flare-nut Connection(with Flare Nuts)							
Liquid Pipe	mm	Φ6.35	Φ6.35	Φ9.53	Φ9.53	Φ9.53	Φ9.53	Φ9.53	Φ9.53
Gas Pipe	mm	Φ15.88	Φ15.88	Φ15.88	Φ15.88	Φ15.88	Φ15.88	Φ15.88	Φ15.88
Condensate Drain		VP25(Outer Diameter Φ32)							
Packing Dimensions	mm	1,110x830x340				1,400x830x340			1,690x830x340
Speed-up Setting HH1	m ³ /h	14.2	14.2	17.8	17.8	19.8	21.2	27	36
Speed-up Setting HH2	m ³ /h	16	16	20	20	22.3	23.5	29.2	37.4

NOTES:
 1.The nominal cooling capacity and heating capacity are based on following conditions:
 Cooling Operation Conditions
 Indoor Air Inlet Temperature: 27°C DB (80°F DB) 19°C WB (66.2°F DB)
 Outdoor Air Inlet Temperature: 35°C DB (95°F DB)
 Piping Length: 5.0Meter Piping Lift: 0Meter
 Heating Operation Conditions
 Indoor Air Inlet Temperature: 20°C DB (68°F DB)
 Outdoor Air Inlet Temperature: 7°C DB (45°F DB) 6°C DB (43°F DB)

2.The sound pressure level is based on following conditions:
 1.0m beneath the unit, 1.0m from Discharge Grille.
 The above data was measured in an anechoic chamber so that reflected sound should be taken into consideration in the field. When bottom air inlet is adopted, sound pressure will increase according to factors such as installation mode and the room structure.